



Building Resilient Communities through
Integrating Climate Change Adaptation
with the Sustainable Development Goals
in the University Education and Research

supported by



Federal Ministry
for Economic Cooperation
and Development



Deutscher Akademischer Austauschdienst
German Academic Exchange Service



BRIDGE

Building Resilient Communities through Integrating Climate Adaptation with the Sustainable Development Goals (SDGs) in the University Education and Research (BRIDGE)



Building Resilient Communities through Integrating Climate Adaptation with the Sustainable Development Goals (SDGs) in the University Education and Research (BRIDGE) is a project funded by the German Academic Exchange Service (DAAD) and the Federal Ministry for Economic Cooperation and Development (BMZ). It is a joint project of RWTH Aachen University and the Kwame Nkrumah University of Science & Technology (KNUST) in Kumasi, Ghana

BRIDGE is a capacity building project establishing international partnership. The main objectives of BRIDGE include identifying and analysing climate related risks and deriving suitable adaption measures. Moreover, the project seeks to incorporate climate adaption techniques into the curricula at KNUST, widen the teaching and research capacity of junior researchers and academic staff and modernize teaching materials to enhance resilience of teaching modes towards global challenges. In the sense of the funding programme, the objectives are aligned with United Nations SDG-related goals and actions.



Building Resilient Communities through Integrating Climate Change Adaptation with the Sustainable Development Goals in the University Education and Research



KWAME NKURUMAH UNIVERSITY OF SCIENCE & TECHNOLOGY

Slide: 2

Date: 14 October 2025

supported by



Deutscher Akademischer Austauschdienst
German Academic Exchange Service

Project Partners



Academic and Research Department Engineering Hydrology
UNESCO Chair in Hydrological Change and Water Resources Management
– RWTH Aachen University, Germany
<https://lfi.rwth-aachen.de/en/>



Institute of Catholic Theology
– RWTH Aachen University, Germany
<https://www.kt.rwth-aachen.de/>



Physical Geography and Climatology Teaching and Research Area
– RWTH Aachen University, Germany
<https://www.klimageo.rwth-aachen.de/>



KWAME NKURUMAH UNIVERSITY
OF SCIENCE & TECHNOLOGY

Centre for Settlement Studies
& Department of Religious Studies
– Kwame Nkrumah University of Science & Technology
<https://csstudies.knust.edu.gh/>
<https://religions.knust.edu.gh/>

Associate Partner:



Institute of Linguistics and Communication Studies
– RWTH Aachen University, Germany
<https://www.isk.rwth-aachen.de/>



Building Resilient Communities through
Integrating Climate Change Adaptation
with the Sustainable Development Goals
in the University Education and Research



KWAME NKURUMAH UNIVERSITY
OF SCIENCE & TECHNOLOGY

Slide:
Date:

supported by



Deutscher Akademischer Austauschdienst
German Academic Exchange Service

What is it all about?

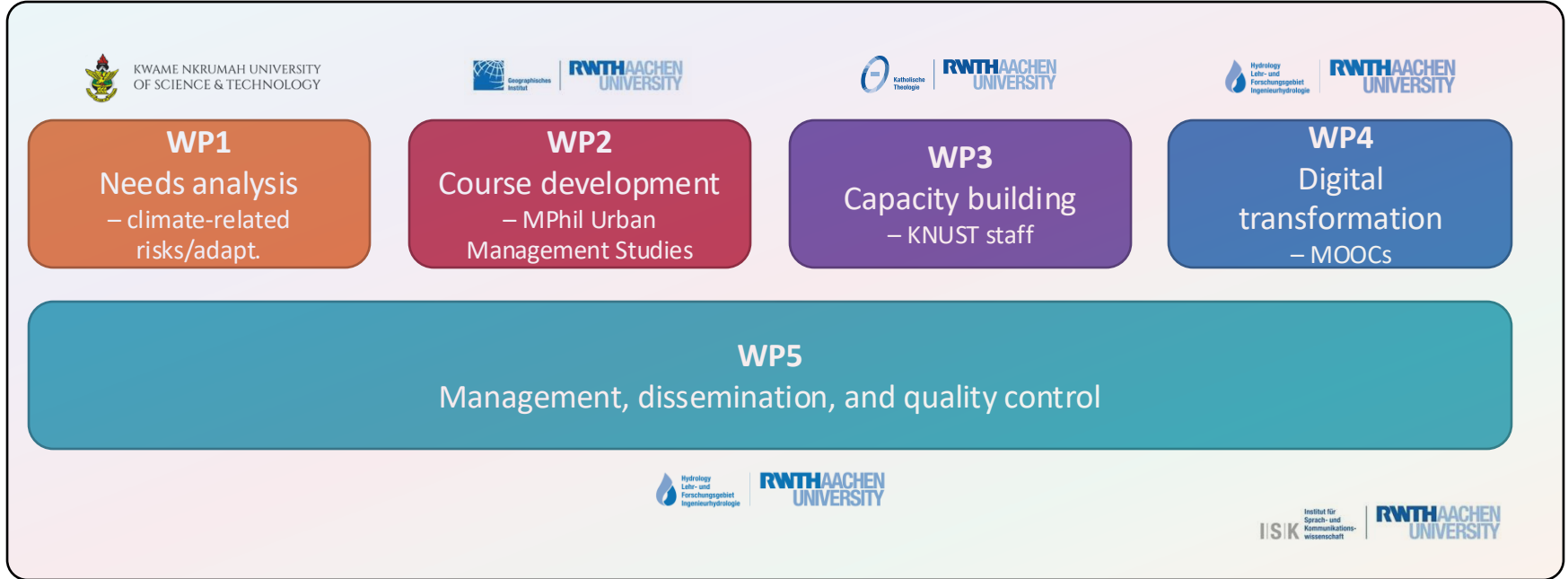


KWAME NKRUMAH UNIVERSITY OF SCIENCE & TECHNOLOGY

The **wider objective** of BRIDGE is to increase the Ghanaian community's resilience and adaptive capacity to climate change and empower the country to achieve the SDGs.



Focus on six SDGs



Building Resilient Communities through Integrating Climate Change Adaptation with the Sustainable Development Goals in the University Education and Research



KWAME NKRUMAH UNIVERSITY OF SCIENCE & TECHNOLOGY

Slide: 4

Date: 14 October, 2025

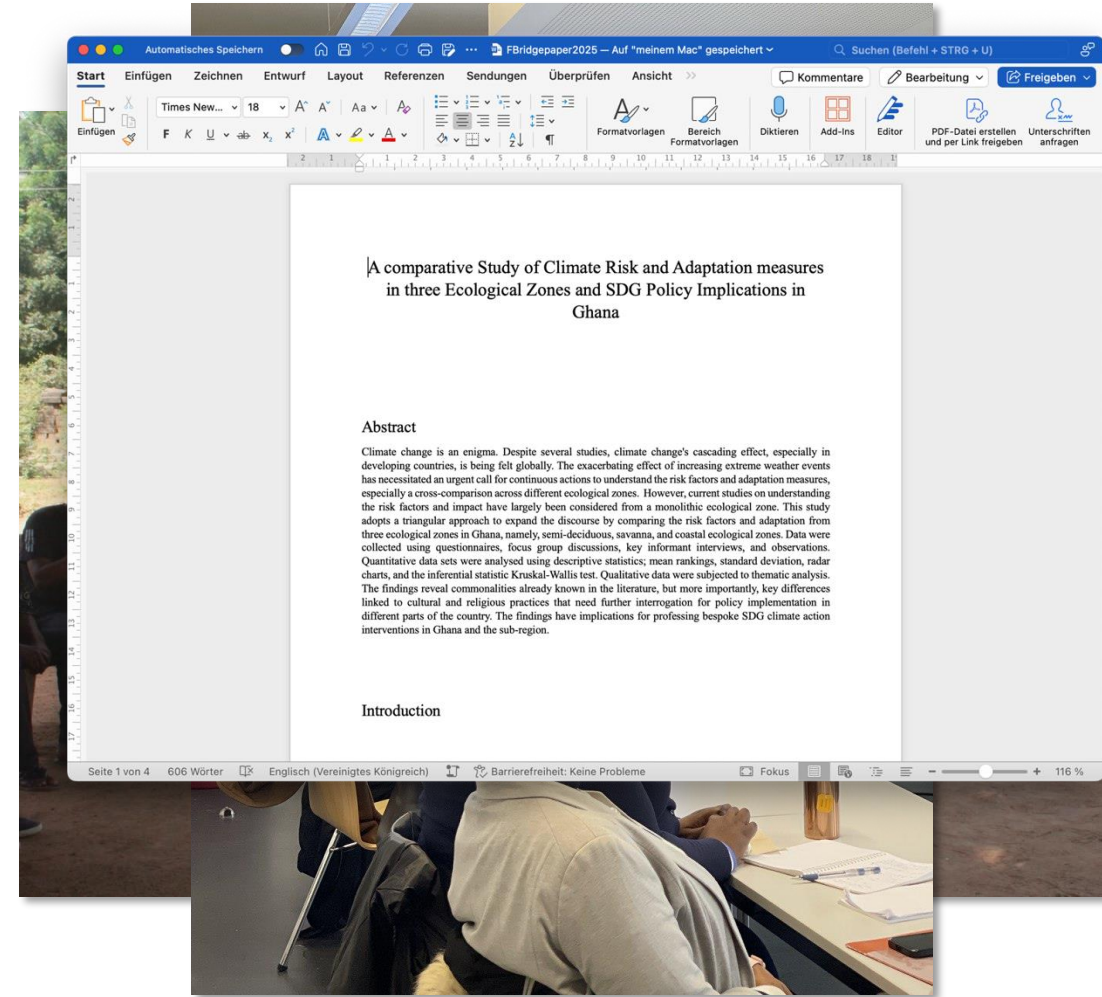
supported by



Deutscher Akademischer Austauschdienst German Academic Exchange Service

Needs analysis (WP1): Research

- Literature review & local investigations
- Numerous MSc/BSc/PhD
- Active involvement of German and Ghanaian Master's students
- Joint publication



Dissemination (WP5): BRIDGE at symposium (VW Foundation-funded)

→ *Dissemination,
knowledge exchange,
future opportunities*



Course development (WP2)

MPhil Urban Management Studies



Capacity building (WP3): Workshops & field trips/engagement



Digital transformation (WP4): MOOC development

- Newly installed ICT infrastructure
- Training on OER & MOOCs
- 2 MOOCs
- Learning management system

Centre for Settlement Studies

Department of Religious Studies

MOOC 1:
Introduction to Infrastructural Planning and Project Management

MOOC 2:
Religion and Human Development

Dissemination (WP5): Webinars/pitches & social media

e.g., joint webinar with another capacity building project (EU co-funded) in Ghana

bridge
DAAD Project Bridge
17 likes · 70 followers

Posts About Mentions Reviews Reels Photos More

Switch into DAAD Project Bridge's Page to start managing it. [Switch Now](#)

Intro
Joint SDG-Partnerships project of RWTH and KNUST supported by the DAAD and the BMZ

Page - Education website
Mies-van-der-Rohe-Str. 17
0241 8025281
bridge-project@ifi.rwth-aachen.de
project.bridge_
ifi.rwth-aachen.de/en/projekt/bridge

Posts

DAAD Project Bridge
April 19 at 10:00 AM

Impressions from the field: Prof. Kwaku Divine Ahadzie
#dam #flooding #climatechange #workshop #bridge #cooperation #ghana #knust #german #rwth #germanacademicexchangeService

"This was a rare opportunity to have first hand information of the impact of the Akosombo Dam spillage and role played by the Traditional Council and community leaders in responding to the needs of affected victims amid limited resource mobilisation and institutional support."

project.bridge_
Gefolgt Nachricht senden

54 Beiträge 24 Follower 6 Gefolgt

BRIDGE
Bildung
Capacity building in higher education Supported by the #daad and the #bmz international collaboration #rwth #knust
www.facebook.com/profile.php?id=100093345006587
hydrology_rwth, project.impression, suremaproject und 4 weitere Personen sind Follower

Instagram

Naalamie Amissah 33

... and pitches at conferences, lectures, other project meetings, etc.

Creative Commons Licence



This material is licensed by the Creative Commons-Licence
“Attribution 4.0 international”

You are free to:

Share — copy and redistribute the material in any medium or format

Adapt — remix, transform, and build upon the material for any purpose, even commercially

Citation Note:

Prof. Divine Kwaku Ahadzie
Kwame Nkrumah University of Science and Technology, Ghana
Centre for Settlements Studies

Univ.-Prof. Dr.-Ing. Heribert Nacken
RWTH Aachen University, Germany
Academic and Research Department Engineering Hydrology
UNESCO Chair in Hydrological Change and Water Resources Management



Building Resilient Communities through
Integrating Climate Change Adaptation
with the Sustainable Development Goals
in the University Education and Research



RWTH AACHEN
UNIVERSITY



RWTH AACHEN
UNIVERSITY
UNESCO Chair of Hydrological Change
and Water Resources Management



KWAME NKURUMAH UNIVERSITY
OF SCIENCE & TECHNOLOGY

supported by



Deutscher Akademischer Austauschdienst
German Academic Exchange Service